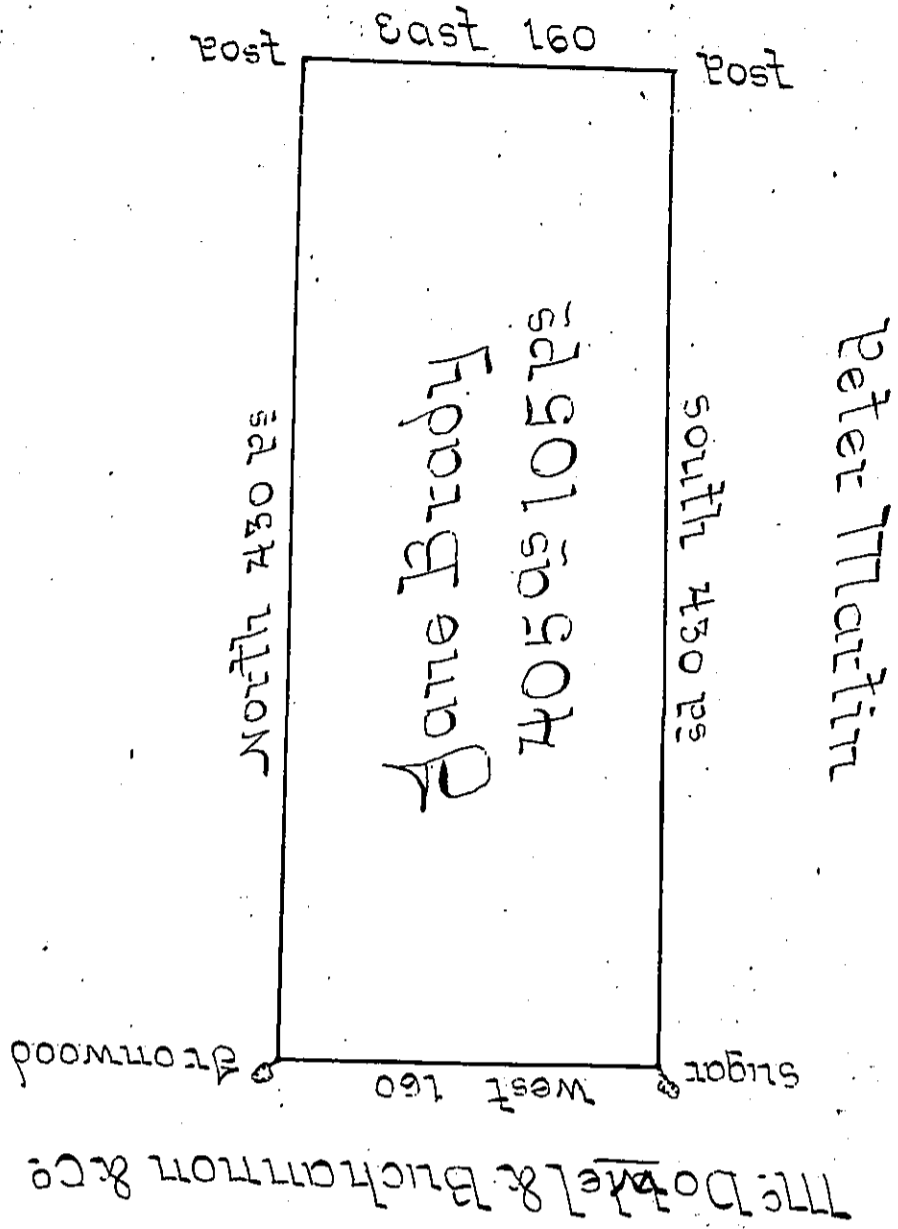


Alex^r Mc Donald



Situated on the Waters of Black Sick Creek in Wheatfield Township, Westmoreland County, containing 405 Acres and 105 Perches & Allowance for Roads &c. Surveyed for James Brady the 29 day of Nov. 1794 on warrant dated the 3^d Day of May 1793 -

James Ross D.S.

To Daniel Brodhead Esq Sg.

IN TESTIMONY that the above is a copy of the original remaining on file in the Department of Internal Affairs of Pennsylvania, made conformably to an Act of Assembly approved the 16th day of February, 1833, I have hereunto set my Hand and caused the Seal of said Department to be affixed at Harrisburg, this — fourth — day of — June — 1901. —

James W. Latta
Secretary of Internal Affairs.